



Everlasting Nail guide



Our Products

CND Shellac

gelish
SOAK-OFF
GEL POLISH



What is Shellac?

Shellac is the brand name for a nail product created by Creative Nail Design based in California. It is a hybrid polish meaning half nail polish and half gel.

What is Gelish?

Gelish is the brand name for a nail product made by Hand and Harmony based in California. It is a gel polish, hence the name.

Who is Shellac and Gelish *best* suited for?

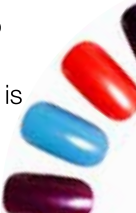
Shellac and Gelish is for people who want to maintain natural nails. The formulation looks as **good from day 1 to day 14-21**, but does not damage your nails.

The product is thin and strong enough to be applied similarly to nail polish but it is cured in a way that gives it great flexibility and durability so that your nails do not break or chip. It also has the incredible shine associated only with gel nails.

If you have thin nails, this is a good way to make them thicker for the duration of your manicure (*see Biosculpt). Both products will protect your nails from sun, and everyday damage and enhance growth.

Who is Shellac and Gelish *least* suited for?

Those looking to lengthen their nails. You cannot use Shellac or Gelish to create a longer nail (*you need Biosculpt). Also, Shellac and Gelish isn't for clients with extremely damaged nail beds, split or peeling nails or nails with any infection. It is best to get on a corrective program with your manicurist before thinking about Shellac or Gelish. If your nail is peeling off, it will take Shellac and Gelish with it.





Everlasting Nail guide



What is Bio Sculpture Gel?

Bio Sculpture Gel was founded and created in 1988 by Elmien Scholtz, a cosmetic science graduate. The company is based in California.

Who is Biosculpt Gel *best* suited for?

Quite simply 'everyone'. Bio Sculpture Gel is for people who want to maintain natural nails but can also be used to lengthen your nails and enhance the thickness. If you have paper thin nails or nails prone to splitting or chipping, this is the product for you!

What sets Bio Sculpture apart from other nail products is the emphasis on the health of the natural nail and the special nail treatments that are applied before painting. The Bio Sculpture product line was awarded a Five Star Safety Rating by Parexel International.

How is Shellac, Gelish and Biosculpt *different* from the traditional polish manicure?

Typical nail polish dries by evaporation, which means your manicure is not cured until 2-3 hours after your service. Think about it – most of your manicure time is spent waiting for polish to dry which is annoying. How many times have you ruined your nails five minutes after leaving the salon?

Shellac, Gelish and Bio Sculpt is cured by UV light, and within minutes. Your nails are completely dry by the time your manicure is over, and strong enough to withstand any accidental knocks.

Removing my Everlasting Product

All three products are removed by soaking the nail in solution wrapped in gauze and tin foil for 5 minutes then gently scraping the polish off the nail. No damage will occur to your nail during this process.

My next appointment

Your nails will last anywhere from **14 to 21 days**. Be careful not to let your nails grow out too long though as breakage may occur.